

# CX200 SiteExpert Communication Service Monitor



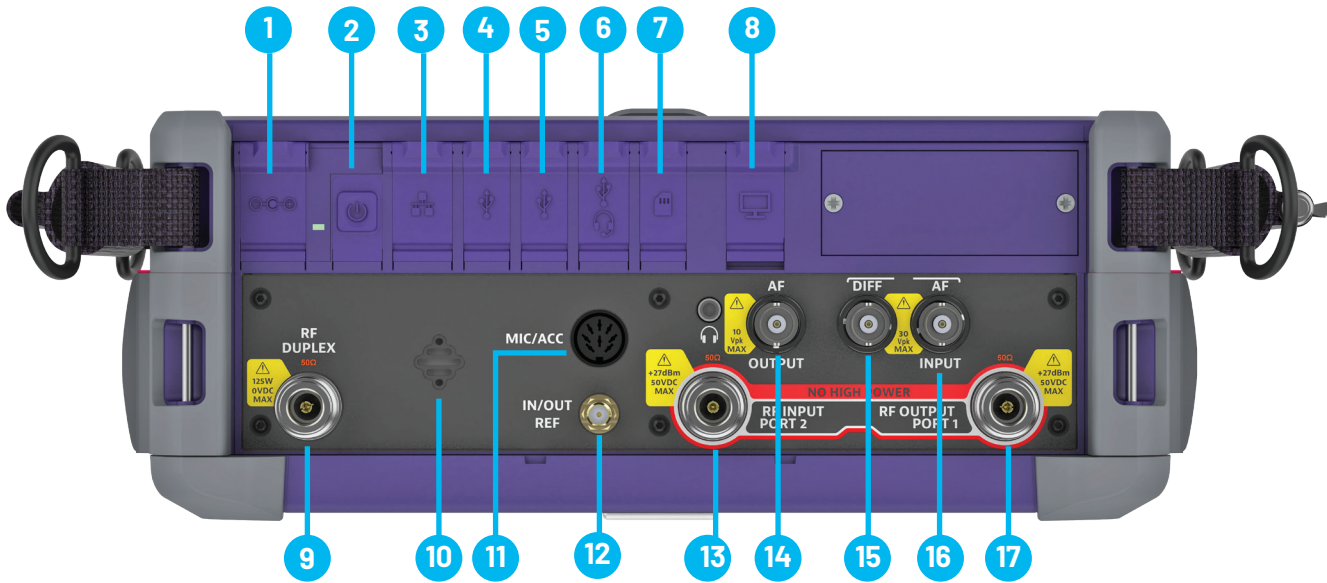
The CX200 SiteXpert is an advanced communications service monitor for modern technicians, offering a user-friendly interface and a comprehensive feature set to meet a wide range of infrastructure and subscriber maintenance needs.

The CX200 incorporates the most popular features from our industry-leading test sets into a field portable package without sacrificing specs or performance.

### At A Glance

- Dimensions: 11.2 in x 6.8 in x 4.2 in  
28.4 cm x 17.4 cm x 10.7 cm
- Display Size: 8 inches (23 cm), diagonal
- Weight: 8.6 lbs. (3.9 kg), Base Unit
- Battery: Internal, 3 Hour Operation
- Rugged: 30 G Shock
- Test Range: -135 dBm to 0 dBm
- Frequency Range: 1 MHz to 3 GHz
- Technologies: Analog, P25, P25 Phase 2, DMR, NXDN, TETRA





- |                  |                       |   |
|------------------|-----------------------|---|
| 1. Power Jack    | 7. SD Card            | 13. RF Input Port 2                       |
| 2. Power Button  | 8. Micro HDMI Out     | 14. AF Output                             |
| 3. Ethernet      | 9. RF Duplex          | 15. AF Differential Input(High Impedance) |
| 4. USB Port      | 10. Microphone        | 16. AF Input(Programmable Impedance)      |
| 5. USB Port      | 11. MIC/ACC           | 17. RF Output Port 1                      |
| 6. USB/Headphone | 12. 10 Mhz In/Out Ref |   |

### Standard Features

The list below of features come standard on every CX200.

- 1 GHz Frequency Range
- Tracking Generator
- Cable and Antenna Analyzer (1-Port)
- WiFi
- VNC
- Spectrum Analyzer
- Smart Access Anywhere
- StrataSync
- Remote Command Interface
- Bluetooth

### Optional Features

The below features are options available on the CX200.

- 3 GHz Frequency Range
- P25
- TETRA
- DMR
- DMR Repeater
- NXDN
- P25 Phase 2
- Auto-Test Applications
- Bird 5017D Power Meter

## A Complete Test Suite

The global land mobile radio (LMR) market is rapidly transitioning from analog to digital. The CX200 is designed with advanced frequency, power, and modulation analysis instruments for both analog and digital systems.

### The CX200 Instruments and Technologies Currently Available

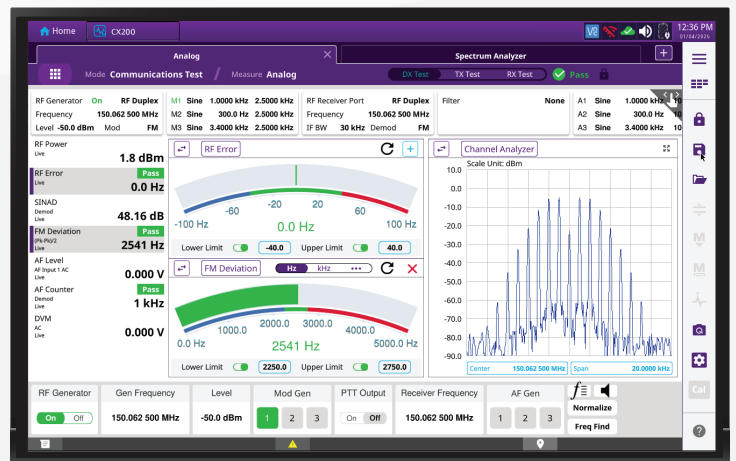
- AM/FM/PM/SSB
- P25 Phase 1
- P25 Phase 2
- LSM
- TETRA
- NXDN
- OneViewer Post Analysis Software
- DMR
- DMR Repeater
- Tracking Generator
- One Port Vector Network Analyzer

### CX200 Instruments and Technologies Coming Soon

- Interference Hunting
- LTE and 5G BS OTA
- Coverage Mapping

## Innovative User Interface

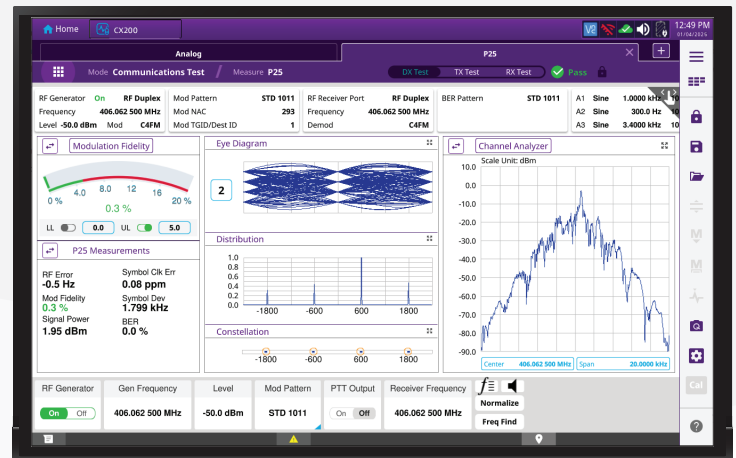
Continuing the innovative user interface established with the CX300, the revolutionary QuickSwitch™ feature streamlines testing by enabling rapid switching between Duplex, Transmit, and Receiver Tests without disrupting current measurement setups. This multi-tab user interface also allows switching between analog, P25, DMR, TETRA, AutoTest, Spectrum Analyzer, and Cable and Antenna Analysis.



Multi-Tab User Interface with QuickSwitch

## P25 Test Features (Optional)

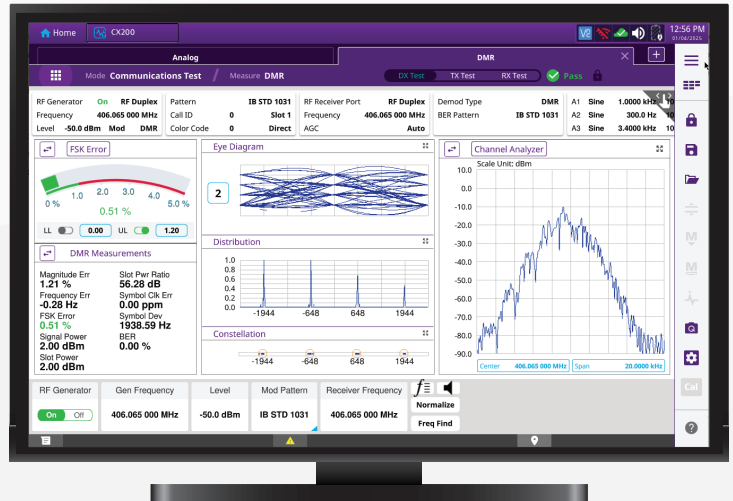
The CX200 offers a comprehensive suite of P25 test features, including Linear Simulcast Modulation. Its large display provides access to essential modulation analysis tools such as the distribution plot, eye diagram, constellation plot, and trajectory plot. Users can view multiple plots simultaneously or expand a specific plot to full screen for detailed analysis. All measurements are presented in a clear, easy-to-read format.



P25 Diagrams and Plots

### DMR Test Features (Optional)

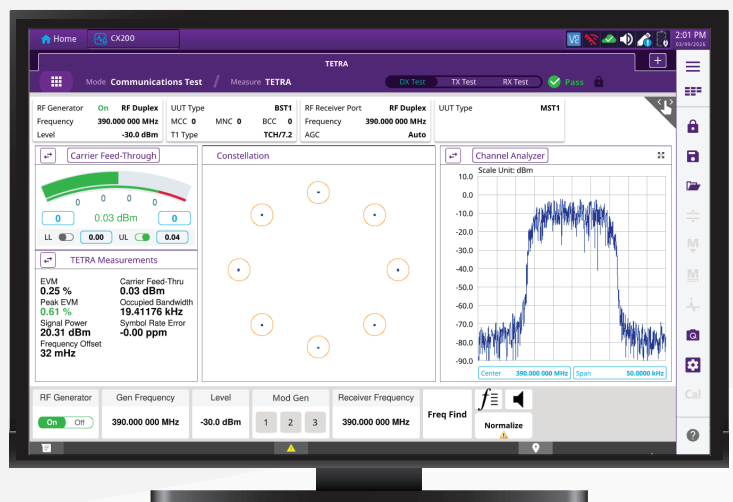
When equipped with the DMR Option, the CX200 enables comprehensive testing of DMR infrastructure and subscriber units. Its large display provides access to essential modulation analysis tools, including the distribution plot, eye diagram, constellation plot, and burst profile plot. All DMR measurements are presented in a clear, easy-to-read format for efficient analysis.



DMR Test Screens

### TETRA Test Features (Optional)

The CX200, when equipped with the TETRA Option, allows you to test a wide range of TETRA radios, mobile and base stations. TETRA measurements are displayed in an easy to ready format.



TETRA Test Screens

## Cable and Antenna Analysis

The CX200, standard, Cable and Antenna Analysis feature enables testing of Distance to Fault, VSWR, and Return Loss using its built-in 1-port Vector Network Analyzer. For precise, calibrated measurements, this option requires the Short-Open-Load Calibrator.

## Auto-Test Applications (Optional)

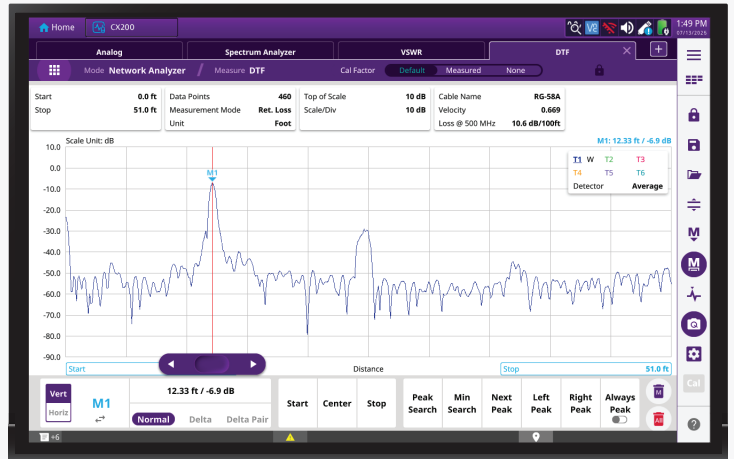
The CX200 provides fully automated radio testing and alignment for today's land mobile radios. With precise instrumentation and automation, it optimizes radio performance in minutes with minimal user input.

Supporting a wide range of automated test and alignment options, the device allows users to customize test sequences and parameters to meet specific requirements. Once configured, it enables real-time monitoring of both test progress and results.

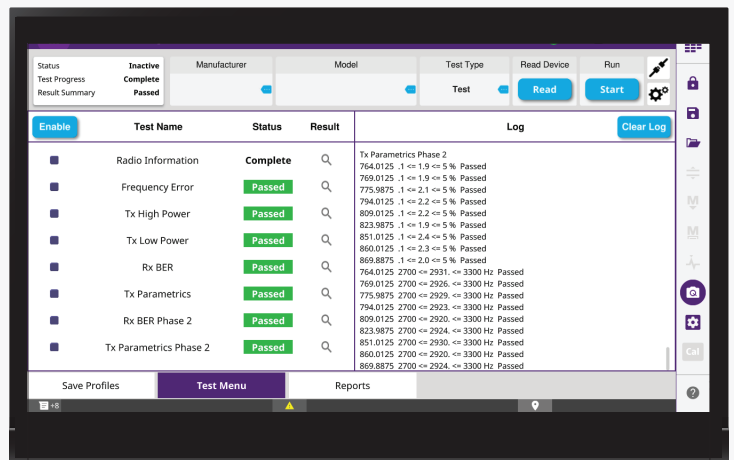
Test data is automatically stored and can be exported via USB to an external PC for documentation and printing. Your test data can also be uploaded to VIAVI StrataSync or transferred to a PC or portable device utilizing the Smart Access Anywhere app.

## VIP Tool (Optional)

The VIP Tool removes unnecessary complexities with traditional instrument programming by leveraging the power of Microsoft Excel. It is scalable, allowing you to create scripts that are as simple or as intricate as you desire. This tool allows you to easily create and export easy-to-read reports with supporting graphics, like Channel Analyzer and Distribution Plots. Work smarter, not harder with the VIP Tool.



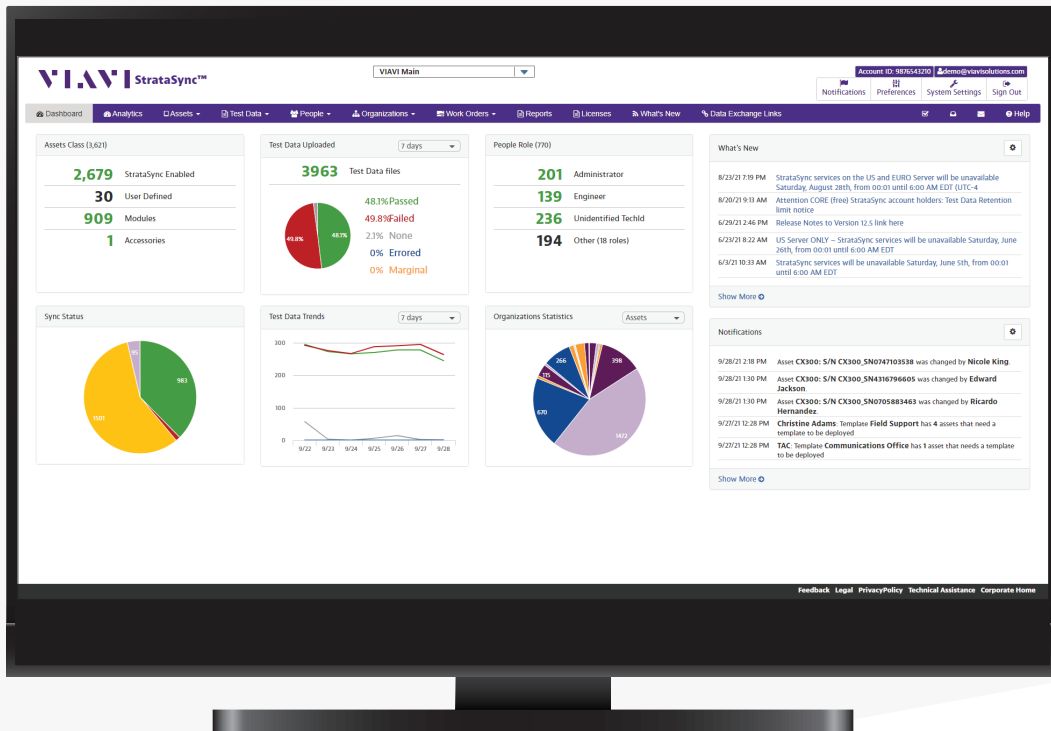
Cable and Antenna Analysis Screens



Auto-Test Screens

# STRATASYNC

StrataSync is a hosted, cloud-based software application that provides asset configuration and test-data management from anywhere in the world. The wireless technology in the CX200 lightens your workload by synchronizing your test results to the cloud and keeping your test set updated with the latest software. Easily save and access test results for both manual and automated tests.

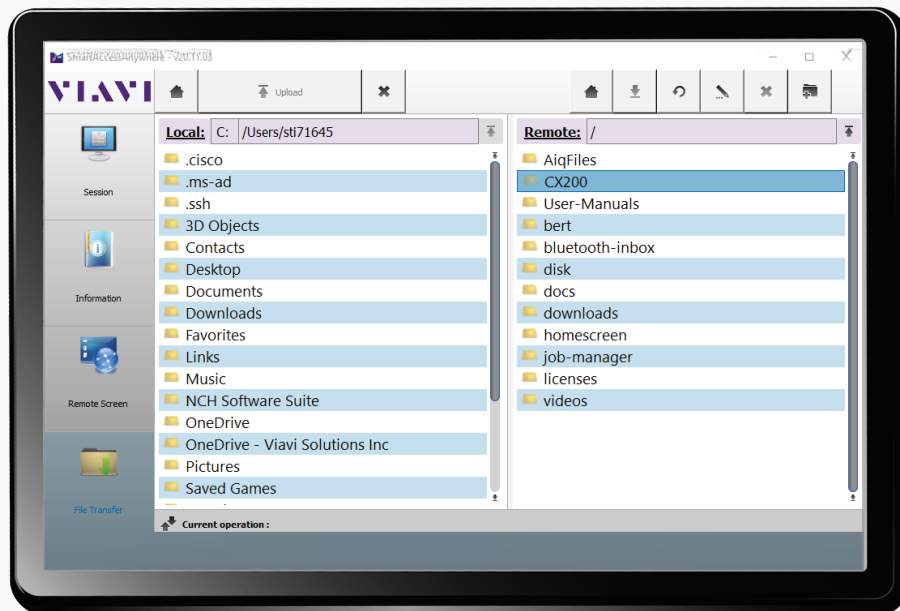
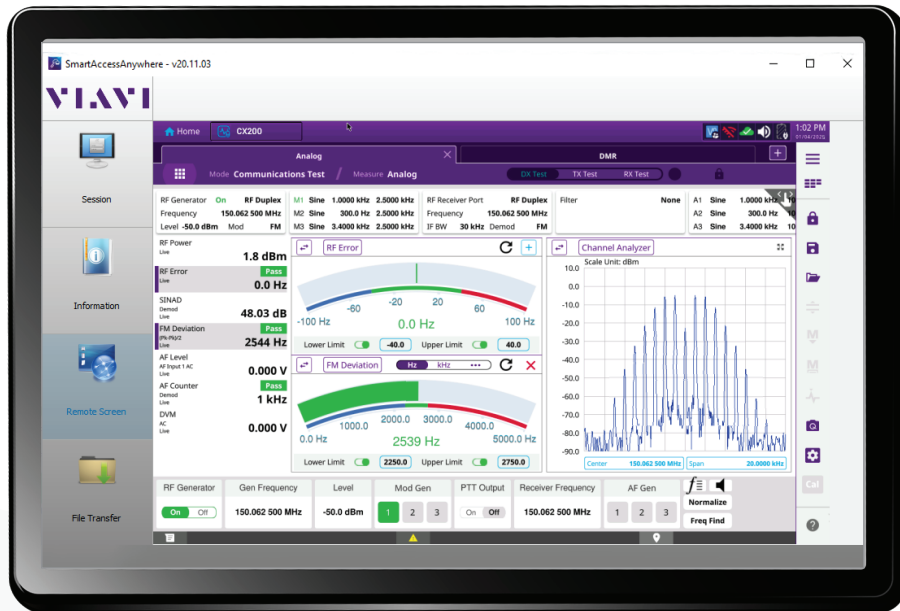


StrataSync Dashboard



# SMART ACCESS ANYWHERE

The VIAVI Smart Access Anywhere application is a handy tool for remotely controlling the CX200. The SAA App enables remote operation from your PC or portable device, which allows you to operate the unit and transfer files from a remote location.



Smart Access Anywhere

# ORDERING INFORMATION

## Versions and Options

Order Number	Description
CX200	CX200 SiteXpert Communications Service Monitor
	<b>Standard Accessories</b>
	AC / DC Power Adapter
	AC Power Cord - US
	AC Power Cord - China
	AC Power Cord - Europe
	AC Power Cord - UK
	Internal Battery, 98 Watt-Hour, Lithium-Ion (Qty 1)
	Front Cover
	Shoulder Strap
	Side Strap (Qty 2)
	Stylus
	Adapter, N(m) to BNC(f) (Qty 3)
	StrataSync
Smart Access Anywhere	
<b>Options</b>	
CX200-DDMR	DMR Test Option
CX200-DDMRR	DMR Repeater (Requires DMR)
CX200-DNXDN	NXDN
CX200-DP25P1	P25 Conventional (Phase 1)
CX200-DP25P2	P25 Phase II (Requires P25 Phase 1)
CX200-DTPB	TETRA Parametric Base Station
CX200-DTPM	TETRA Parametric Mobile Station
CX200-F3GHz	Frequency Range Extension
CX200-SPAA	Software Post Analysis Application
CX200-SPSB	External Power Sensor Support, BirdRF 501xD
CX200-SVIP	VIP Tool

## Auto-Test and Alignment

### *P25 Radios (Requires CX200-DP25P1)*

CX200-TPBK	BK KNG Series
CX200-TPHP25	L3Harris P25 Series (P7300, M7300, P5500, XG-75 Series)
CX200-TPHXL	L3Harris XL Series
CX200-TPIP25	ICOM P25 Series
CX200-TPKV	Kenwood Viking Series
CX200-TPTPM	Tait P25 Series (Test Only)

### *DMR Radios (Requires CX200-DDMR)*

CX200-TDTPM	Tait DMR Series (Test Only)
-------------	-----------------------------

### *Multi-Protocol Radios (CX200-DP25P1, CX200-DDMR, or CX200-DNXDN)*

CX200-TMKNX	Kenwood NX-X000 Series
-------------	------------------------

## Recommended Accessories

CX300-AANT1	Antenna Kit, 1 GHz
CX200-ABAT	Internal Battery, 98 Watt-Hour, Lithium-Ion
CX300-ACBL	RF Cable for AutoAlignment
CX200-ACH	Carrying Case, Hard Transit
CX200-ACS	Carrying Case, Soft

## Optional Accessories

CX200-ABATC	External Battery Charger
CX200-ACB	Carrying Case, Backpack
CX300-ACS10	10 Amp Current Shunt 0.01 Ohm
CX200-ADC	Power Adapter, Automotive DC/DC (Cigarette Lighter)
CX300-AMIC	Microphone
CX300-ASOL	Calibrator (Short-Open-Load)
82556	Attenuator (6 dB/150 W), 1.5 GHz
92793	Bird 5017D Wideband RF Power Sensor
140227	Attenuator (40 dB/2 W), 18 GHz, Type N

Calibration Certificates	
CX200-C9001	Calibration Certificate with Test Data (ISO 9001)
Care Support Plans	
SilverCare (Includes Extended Warranty and Calibration Plan)	
CX200-SILVER-3	SilverCare - First 3 Years
CX200-SILVER-5	SilverCare - First 5 Years
MaxCare (Includes Extended Warranty, Calibration Plan, Loaner, and Accessory Replacement)	
CX200-MAXCARE-3	MaxCare - First 3 Years
CX200-MAXCARE-5	MaxCare - First 5 Years
Certified Calibration Care Plan Add-ons (Requires corresponding SilverCare/MaxCare Plan)	
CERT-CAL-DATA-3	Certified Calibration Data - Pre and Post Cal Data Report for Care Plans - First 3 Years
CERT-CAL-DATA-5	Certified Calibration Data - Pre and Post Cal Data Report for Care Plans - First 5 Years
Training	
Contact us for Training and Support Options	

## VIAVI Care Support Plans

### Increase your productivity for up to 5 years with optional VIAVI Care Support Plans:

- Maximize your time with on-demand training, priority technical application support and rapid service.
- Maintain your equipment for peak performance at a low, predictable cost.

Plan availability depends on product and region. Not all plans are available for each product or in every region. To find out which VIAVI Care Support Plan options are available for this product in your region, contact your local representative or visit: [viavisolutions.com/viavicareplan](http://viavisolutions.com/viavicareplan)

### Features

\*5-year plans only

Plan	Objective	Technical Assistance	Factory Repair	Priority Service	Self-paced Training	5 Year Battery and Bag Coverage	Factory Calibration	Accessory Coverage	Express Loaner
 BronzeCare	Technician Efficiency	Premium	✓	✓	✓				
 SilverCare	Maintenance & Measurement Accuracy	Premium	✓	✓	✓	✓*	✓		
 MaxCare	High Availability	Premium	✓	✓	✓	✓*	✓	✓	✓



[viavisolutions.com](https://viavisolutions.com)

Contact Us +1 800 835 2352

[AvComm.Sales@viavisolutions.com](mailto:AvComm.Sales@viavisolutions.com)

To reach the VIAVI office nearest you, visit [viavisolutions.com/contact](https://viavisolutions.com/contact)

© 2025 VIAVI Solutions Inc.

Product specifications and descriptions in this document are subject to change without notice.

Patented as described at [viavisolutions.com/patents](https://viavisolutions.com/patents)

cx200-br-avi-nse-ae  
30194344 903 0925